

The Art of
Business Intelligence

HYPERION ESSBASE STUDIO TUTORIAL

BY EXAMPLE

PART 2

(DRILL-THROUGH)

Written by:

Christian Screen

ArtOfBI.com (The Art of Business Intelligence)

Table of Contents

ABOUT THIS TUTORIAL	3
OBJECTIVE	3
SUMMARY	3
SOFTWARE DEPENDENCIES	3
CREATE A DRILL-THROUGH REPORT.....	4
DIRECTION.....	4
DRILLIN' FOR GOLD.....	4
SECTION SUMMARY	7

About this Tutorial

OBJECTIVE

This tutorial continues from [Part 1](#) of this series engaging with the new Oracle/Hyperion Essbase Studio available with Hyperion 11x.

SUMMARY

This is the second part of a multi-part series on developing with Oracle Essbase Studio. As with all parts in this series, each document continues from its preceding parts, unless otherwise noted. By the end of this tutorial one will be able to understand, created, and execute a drill-through report.

Part 1 can be found here: <http://www.artofbi.com/index.php/2009/08/essbase-studio-tutorial-by-example/>

SOFTWARE DEPENDENCIES

In order to use this tutorial the following services must be started and functioning properly.

- Shared Services
- Essbase Services
- Essbase Studio Service

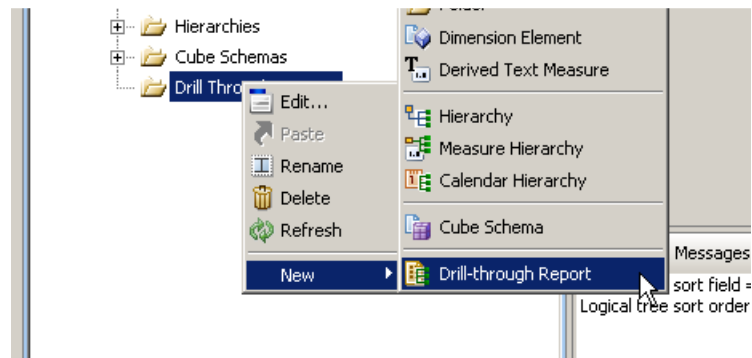
Create a Drill-Through Report

DIRECTION

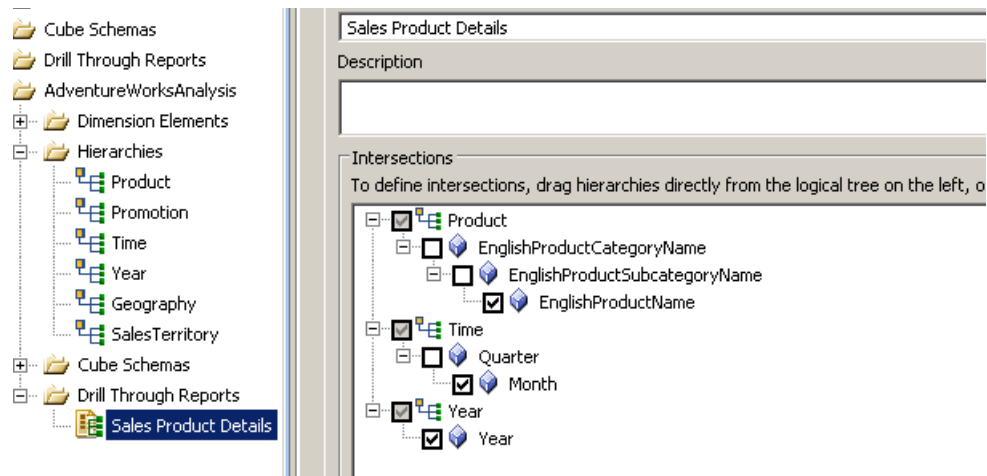
At this point we have built and deployed a “quick and dirty” cube. We have shown you where other advanced functionality can be leveraged in EStudio even though we have skipped most of the advanced features and focused on the basics of EStudio. Now we will use a more advanced feature called drill-through reports. This section will give the user the ability to conduct analysis from a pre-calculated OLAP environment (ex: spreadsheet analysis) into a relational database detail summary all within the same navigation scope. EStudio allows for other drill-through options such as pointing to a URL or calling a custom Java Class function.

DRILLIN’ FOR GOLD

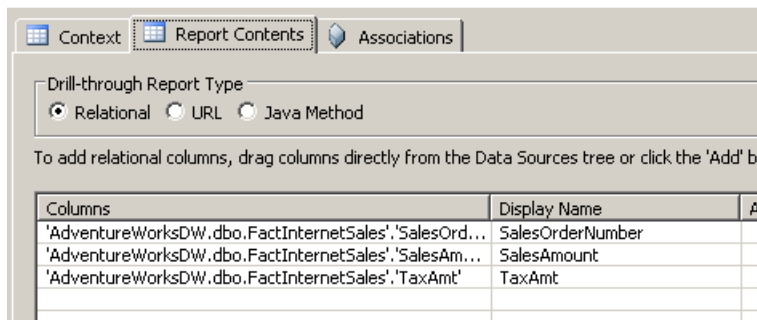
1. On the Metadata Navigator pane, navigate to the **AdventureWorksAnalysis** folder and expand it. Right-click on **Drill Through Reports** and select **New > Drill-through Report**



2. A new reports pane opens in the center window.
In the Name field, remove the current text, and type **Sales Product Details**
3. From the Hierarchies folder in Metadata Navigator pane drag the following hierarchies into the Intersections field:
 - a. Product
 - b. Time
 - c. Year
4. Uncheck all hierarchy level boxes except:
 - a. EnglishProductName
 - b. Month
 - c. Year



5. Click **Save**
6. On the Report Contents tab, select Relational (default).
On this tab we need to identify the columns from our core relational data source that will be exposed to the user when they enact the drill-through report from their multidimensional analysis.
7. Click the **Add** button to the right of the tabular grid.
8. Expand AdventureWorks > FactInternetSales and select the following columns (hold ctrl button to select multiple)
 - a. SalesOrderNumber
 - b. SalesAmount
 - c. TaxAmt
9. Click **OK**
Click **Save**



10. On the **Associations** tab, check the **AdventureWorksCubeSchemaModel** checkbox.
Click **Save**
Click **Close**
11. Find your favorite Essbase analysis tool (Essbase Add-In or Smart View), open a connection to our new cube, and run an initial retrieve.

12. Drill-down on the **Product** dimension to a level0 member such as **Hitch Rack - 4-Bike**

13. Slice on a month (Jul), a year (2003), and a account/measure (SalesAmount)

Retrieve the result.

A	B	C	D	E	F	G
	Promotion	Jul	2003	SalesTerritory	SalesAmount	
Hitch Rack - 4-Bike	1,080.00					

14. To enact our drill-through report, click on the cell value and locate the drill-through report list.

Run the report (view/launch, etc.)

The screenshot shows the Essbase Studio interface. A table is displayed with columns A through K. The data is as follows:

A	B	C	D	E	F	G	H	I	J	K
	Promotion	Jul	2003	SalesTerritory	SalesAmount					
Hitch Rack - 4-Bike	1,080.00									

A 'Linked Objects Browser' dialog box is open over the table. The dialog box title is 'Linked Objects Browser -- Demodrive:AdvWorks:IntSales'. It contains a 'Member Combination' field, a 'Linked Objects' section with a table, and several buttons at the bottom.

Object	Object Description	Linked Object and Object	Created
Drill-Throu	Essbase Studio	Essbase Studio Server	Essbase

Buttons in the dialog box: Attach..., Edit..., View/Launch, Delete, Help, Close.

15. The report will open. Now validate that your results in the report tie-out with your original Essbase cube query. Yes, this is awesome!

	A	B	C	D
1	SalesOrderNumber	SalesAmount	TaxAmt	
2	SO51380	120	9.6	
3	SO51420	120	9.6	
4	SO51409	120	9.6	
5	SO51410	120	9.6	
6	SO51422	120	9.6	
7	SO51450	120	9.6	
8	SO51468	120	9.6	
9	SO51668	120	9.6	
10	SO51676	120	9.6	
11		1,080.00		
12				

SECTION SUMMARY

In this section we created a simple drill-through report. One of the most important things to note is that when we created the drill-through report in EStudio, we did not need to re-deploy or EStudio Schema or Model. All we needed to do was create it and it was available from our analysis tool (we used the Essbase Excel Add-In for the visual examples). On a more advanced note we could have created the drill-through report using a custom SQL Script. We could have joined our drill-through dataset to the customers dimension to retrieve customer information or shipping information. There are a lot of possibilities available to you. We merely showed the basics.